

# 1088 Channel High Speed GLV Module

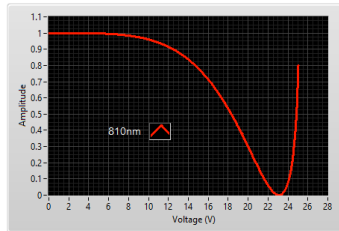
**Model Number: F1088-HS, D1088-HS, G1088-HS**

## Features

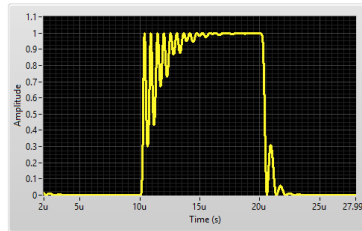
- Enhanced module architecture that supports column rates up to 350kHz in AMP mode. (1024 amplitude levels for each pixels.) Higher column rates can be achieved when downloading a subset of pixels.
- The GLV module is separated from the control electronics with a flex cable to allow smaller optical head designs and facilitates optical alignment.
- Available in UV, Visible, or IR versions.
- Phase modulator version is also available.



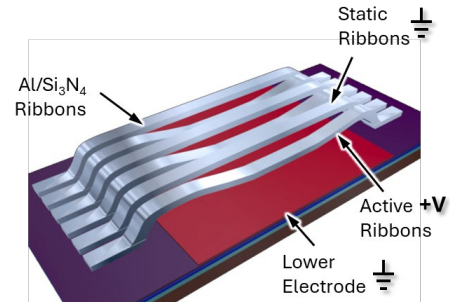
F1088 Intensity-Voltage Response



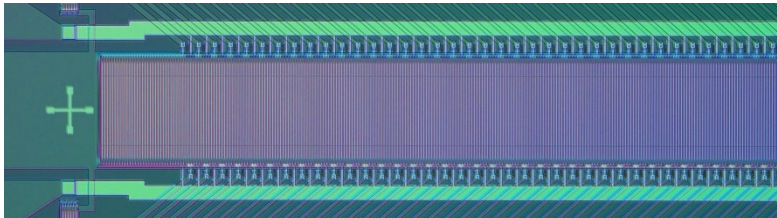
F1088 Pulse Response



F1088 IV Curve and Pulse Response



GLV Pixel



G1088 Ribbons array

## 1088 Channel High-Speed GLV Module Specifications

Max Optical Power	80W at 808nm CW
Modulation Frequency	350 kHz
Amplitude Levels	10 bits
Grating Pitch	8.5 $\mu\text{m}$
Number of Pixels	1088
Pixel Size	25.5 $\mu\text{m}$ wide (3 periods of Grating)
Array Size	27.7 mm wide