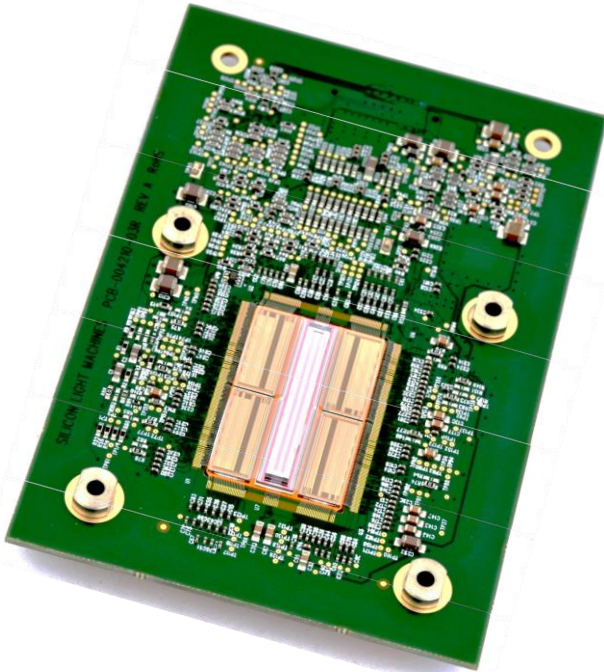




# 1088 Channel GLV Module



**Model Number:** F1088

A versatile module for high-speed printing or display applications. Available in UV, Visible, Violet, or IR versions.

## 1088 Channel GLV Module Specifications

	Minimum	Nominal	Maximum	Unit	Notes
<b>Number of Pixels</b>		1080			
<b>Pixel Pitch</b>		25.5		µm	
<b>Operating Wavelength</b>		355		nm	UV version
		405		nm	Violet version
	450	543	658	nm	Visible version
	800	808	825	nm	IR version
<b>Laser Power</b>			80	W	IR version
<b>Optical Rise Time</b>		500		nsec	0 <sup>th</sup> -order operation
<b>Optical Fall Time</b>		700		nsec	0 <sup>th</sup> -order operation
<b>Image Data Resolution</b>		10		bits	
<b>Column Rate</b>			108	KHz	Full 10-bit operation
			500	KHz	Three-level operation